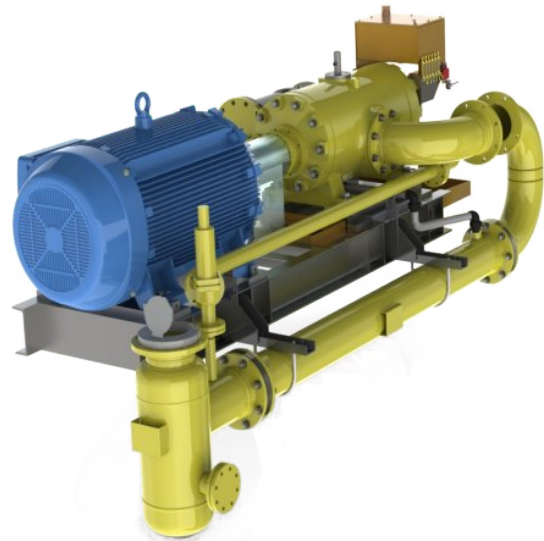


# R TYPE

## SLIDING VANE COMPRESSOR

### Design:

- / Cast iron cylinder with surface treatment, simple casing for air-cooled machines and double casing for liquid cooled machines
- / Bare shaft or skidded
- / One-piece steel rotor
- / Vanes are manufactured from high-strength composite materials (phenolic resin and aramide fibers) or from a specific polymer
- / Single or double mechanical seal
- / Roller bearings, ball bearings, double taper roller bearing, depending on the application
- / API Coupling
- / Proprietary micro-lubrication system :oil pump driven by compressor shaft or by independant electric motor (Minilub). Monitoring as an option
- / Check valve on discharge
- / Suction and discharge manometer
- / Temperature and pressure switches on suction
- / Inlet filter (strainer or ceramic plug type)
- / Factory test with test report
- / Long conservation packing with nitrogen insulation
- / Engineering and documentation
- / Automation



### Performances:

- / Flow rate: from 5 up to 6000 m<sup>3</sup>/h
- / Pressure: above 30 bar

### Standard materials:

- / Cast iron or nodular cast iron casing
- / Steel rotor
- / Other materials according to the customer's technical requirements

### Industrial applications:

- / Flare & vent gas
- / Collection and transport of biogas on landfills
- / Mixing of Anaerobic Digestors on AD facilities
- / Mixing of Sludge Digestors from Waste Water Treatment Plants
- / Cogeneration
- / Process compressor (chemical, food, pharmaceutical...)
- / Mine gas compressor
- / Steam compressor
- / Petrol gas booster/surpressor